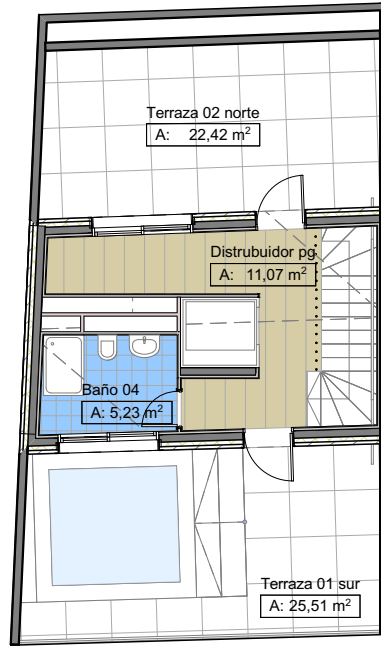
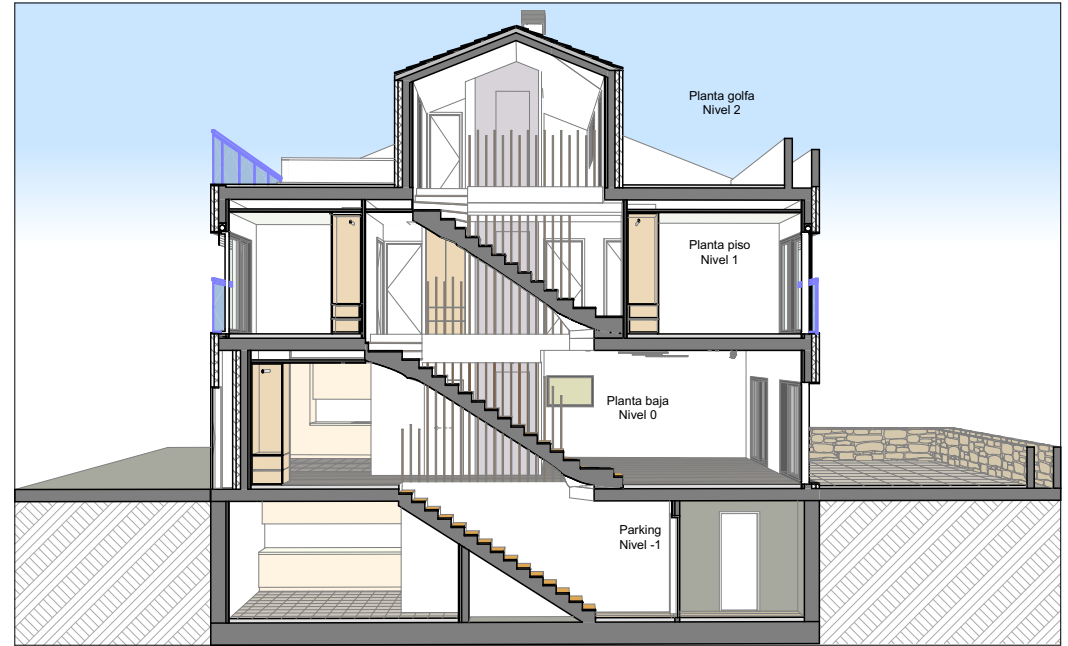


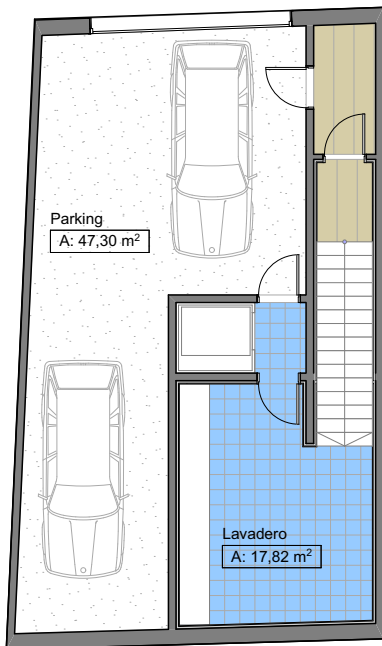
Planta primera



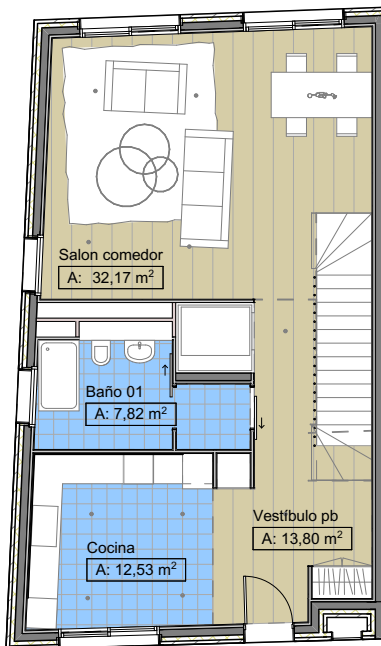
Planta golfa



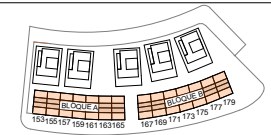
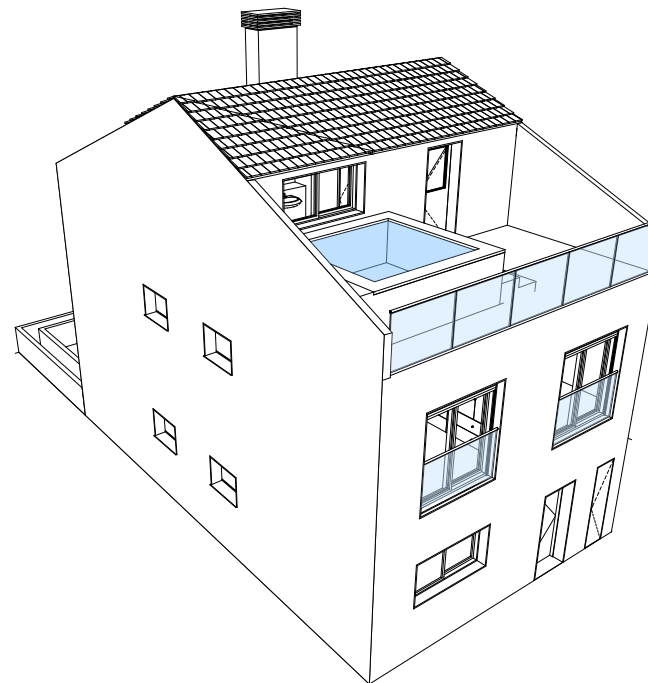
Sección



Parking



Planta baja



**VIVIENDA ADOSADA**  
SUPERFICIE CONSTRUIDA

Planta Baja	89,00 m <sup>2</sup>
Planta Primera	89,00 m <sup>2</sup>
Planta Golfa	33,00 m <sup>2</sup>
<b>Total</b>	<b>211,00 m<sup>2</sup></b>
Planta Sotano	89,00 m <sup>2</sup>
Patio norte	34,00 m <sup>2</sup>
Terraza sur	28,00 m <sup>2</sup>
Terraza norte	28,00 m <sup>2</sup>
<b>Total</b>	<b>179,00 m<sup>2</sup></b>